

## Product information sheet

Product Name: **Rubber Speed Bumps 2.25" thick**

Models: 6', 4' long

Product Description: 1. Material: compression molded composite: 100% recycled rubber and polyurethane prepolymer

2. Physical properties of the rubber composite:

a) Density	0.6 oz/cu in	(ASTM C642)
b) Durometer Hardness	70A ± 7	(ASTM D2240)
c) Tensile Strength	300 psi	(ASTM D412)
d) Compression deformation	7% at 70psi, 68°F	(ASTM D575)
e) Brittleness at Low temperature:	-40°F	(ASTM D746)
f) Freeze and thaw when exposed to deicing chemicals	no loss after 50 cycles	(ASTM C672)
f) Coefficient of thermal expansion:	$8 \times 10^{-5}$ in/in/°F	(ASTM C531)
g) Weathering 70 hours at 158°F		(ASTM D573)

- hardness retained 100% (± 5%)
- compressive strength 100% (± 5%)
- tensile strength 100% (± 5%)
- elongation retained 100% (± 5%)

3. Available models: 6', 4' long

4. Basic dimensions and nominal weights as per attached drawing for 6' model

5. Finishing: Black recycled rubber composite with yellow, durable and reflective, preformed pavement marking tape (ASTM D4061) 6" wide, covered with glass beads, as per attached drawing

Installation method: installation with rebar spikes 14" long (minimum diameter ½")

- 4 spikes for 6' model
- 3 spikes for 4' model

Components: a) 100% recycled rubber from car and truck tires (NR, SBR)

b) polyurethane prepolymer

c) cat's eyes reflectors

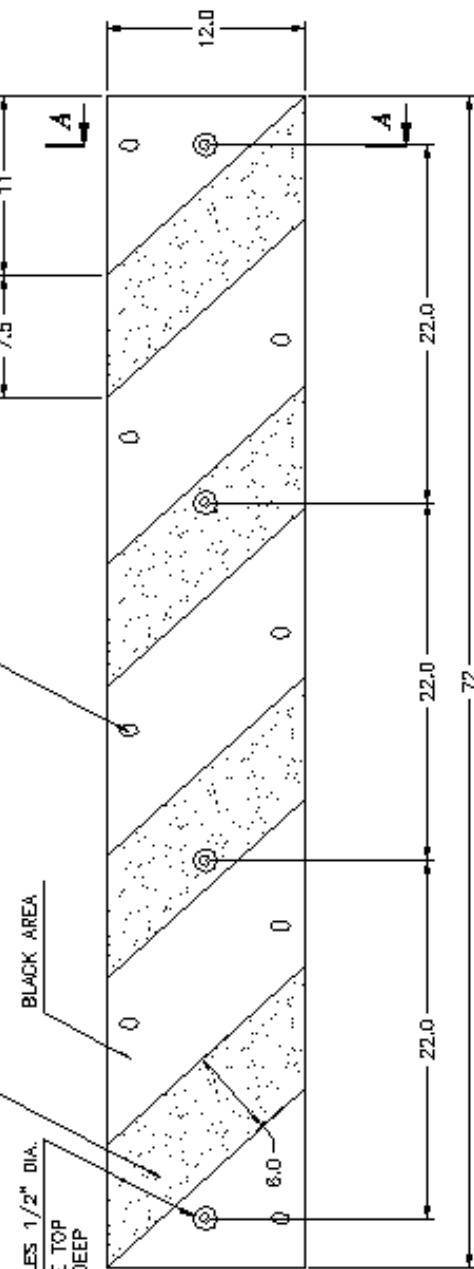
d) yellow, durable and reflective preformed pavement marking tape as per ASTM D4061, covered with the glass beads

e) molded in steel washers

Attached Drawings: 6' model, drawing No. 6SB01-1  
14" rebar spike, drawing No. 05SP01

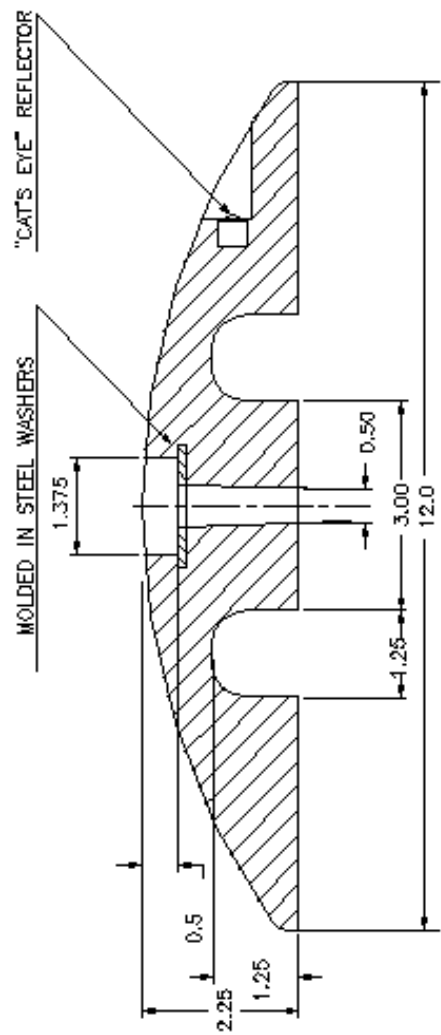
REVISIONS	
REV.	DESCRIPTION

MOLDED IN A DURABLE YELLOW TAPE  
6" WIDE, COVERED WITH THE GLASS BEADS  
"CAT'S EYES" REFLECTORS  
EIGHT PER SPEED BUMP

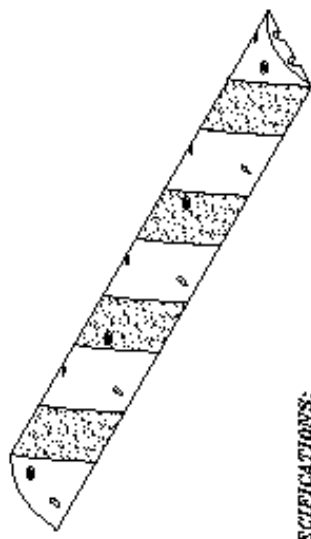


FOUR MOUNTING HOLES 1/2" DIA.  
RECESSED FROM THE TOP  
1-3/8" DIA., 1/2" DEEP

BLACK AREA



SECTION A-A



PRODUCT SPECIFICATIONS:

1. MATERIAL: COMPRESSION MOLDED RECYCLED RUBBER COMPOSITE
2. NOMINAL DIMENSIONS: 72"L x 12"W x 2.25"H
3. FOUR MOUNTING HOLES 1/2" DIA. (RECESSED 1-3/8" DIA. AND 1/2" DEEP, TO ACCOMMODATE SPIKE'S HEAD) ARE PROVIDED FOR INSTALLATION WITH SPIKES OR LAG BOLTS
4. MOLDED DURABLE, YELLOW AND REFLECTIVE PREFORMED PAVEMENT MARKING TAPE (ASTM D4061), 6" WIDE, COVERED WITH GLASS BEADS, PROVIDES GOOD VISIBILITY DURING DAY AND NIGHT
5. EIGHT "CAT'S EYES" REFLECTORS (FOUR PER SIDE) PROVIDE ADDITIONAL REFLECTIVITY AT NIGHT
6. WEIGHT OF THE PRODUCT: 76 lbs.

UNLESS OTHERWISE SPECIFIED:  
DIMENSIONS ARE IN INCHES  
DECIMALS TOLERANCES UNLESS  
OTHERWISE SPECIFIED:  
x ± 1/8"  
xx ± 1/16"

DATE	DATE	DATE	SCALE	DWG NO.	SHEET	SIZE
			1-6	6SSB01-1		C

RUBBER SPEED BUMP  
6 FT. MODEL, 2.25" THICK